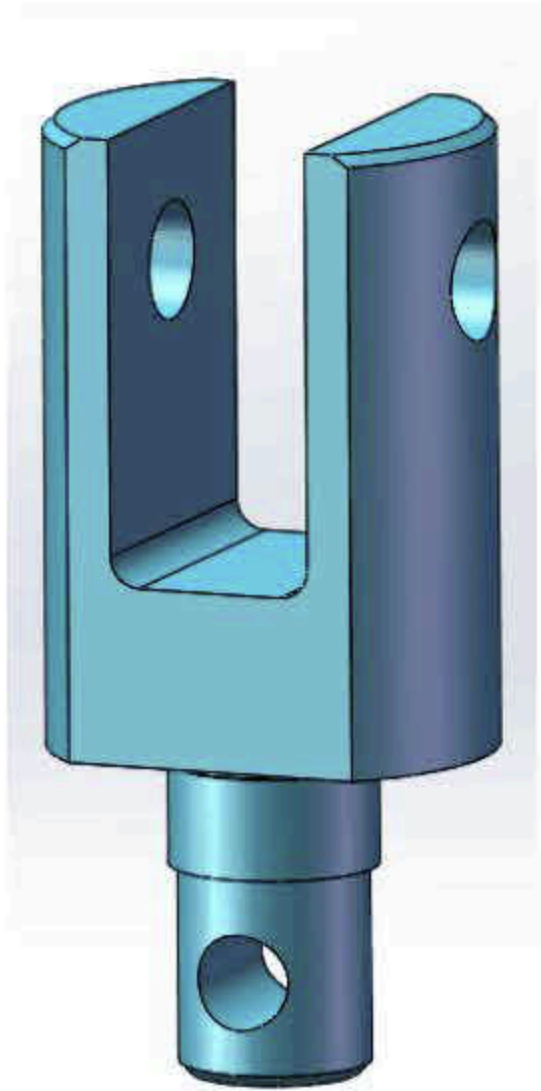


Pipe Tensile Grip

1, Description

This test fixture is mainly for the tensile test polyolefin pipes. According to ISO 6259-3 (Type 3).



3D drawing



2, Standard

ISO 6259-3: Thermoplastics pipes -- Determination of tensile properties -- Part 3: Polyolefin pipes

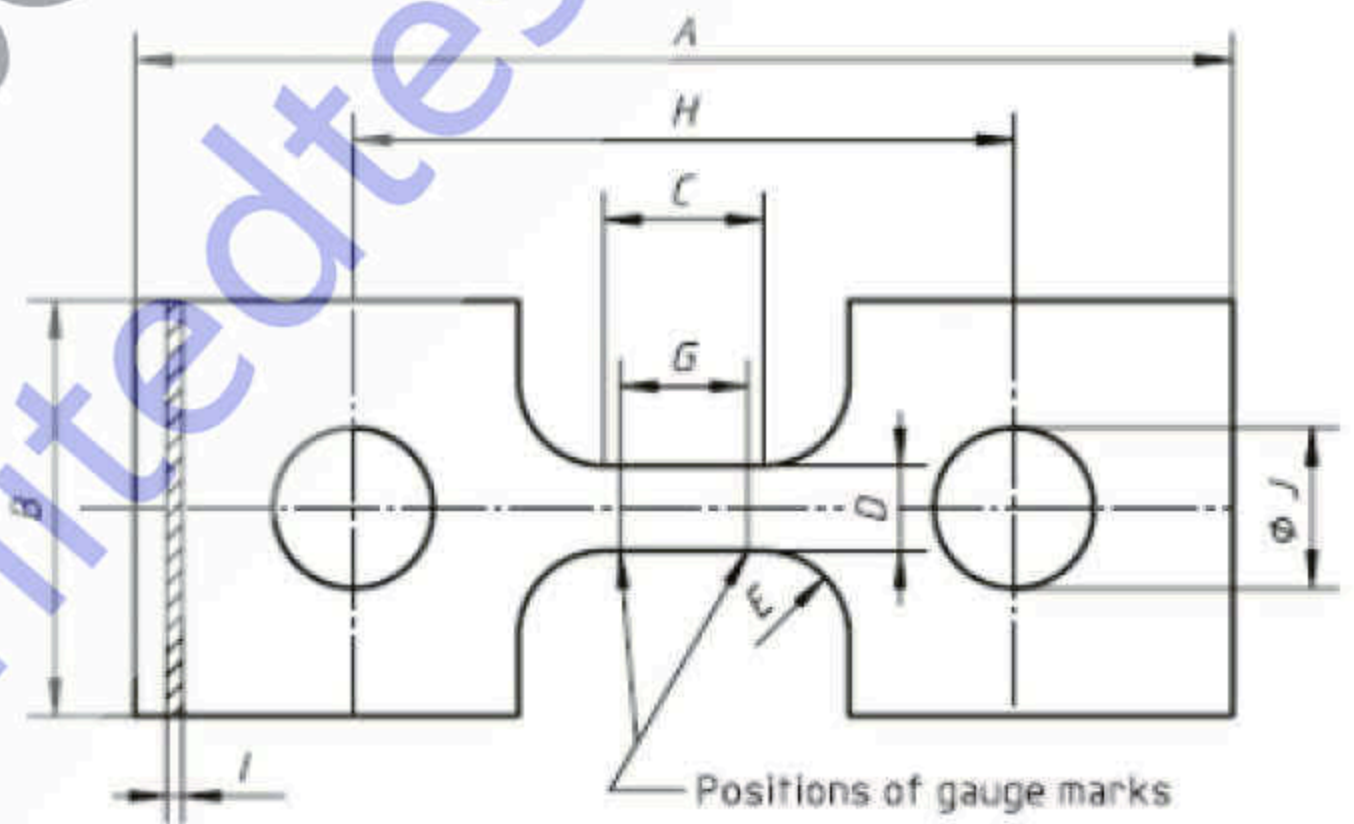


Figure 3 — Type 3 test piece

Test Specimen

3, Main technical specification

| Number | Max. load | Fitting pin size | Sample pie size | Sample thickness | Weight (pc) | Height |
|---------|-----------|-----------------------|-----------------|------------------------------------|-------------|--------|
| GT10021 | 50KN | Φ16mm (customized) | Φ32mm | 12~25mm 25~40mm (customized) | 2.5kg | 160 |